

Super Selection at this Fall Farm & Cattle Related Equipment Auction

# Micke Dairy, LLC & Other Estates

## Thursday, October 18, 2018 11:00 a.m.

5316 Oakwood Rd., Reedsville, WI

Directions: Hwy. 10 east of Brillion or west of Reedsville to Oakwood Rd.—south to farm

**Selling on the neat & tidy Micke Dairy**—A great group selection in one location. All five main farms represented are estates, have sold the farm, and or discontinued dairy farming recently. Great Hosts, quality selection and site with sale held on the Mickes huge concrete feed pad—kind of a “Mini Fall Round-Up”



**NH TG230 MFWD Tractor**, PS, Supersteer, Companion Seat in clean cab, 710/70R42's (75%), 600/70R 30's w/fenders, rear pair 227 kg outer weights, full rack 16 suitcase up front, Quad Remotes, Fold-away Flashers, very nice paint & only 3754 hrs. SN 12947. A nice clean low-houred Micke tractor.



Micke Dairy--**2010 Ford F250 XLT Super Duty** V8-power stroke, 4x4, standard cab, 8' box w/5<sup>th</sup> wheel, bucket seats—clean farm truck w/123K miles.



**Late Mdl. Wacker Neuson TH627 Telehandler**, 4x4, Big Cab, All Wheel Steer, Standard QT Bucket System, Aux. Hyd., 90" Material Bucket, has Grammar Seat & is Kohler Dsl. Powered. Only 1553 Hrs. on this well built HD compact unit.

**More Micke Dairy Equipment....**



**NH L180 Skidsteer** w/cab, QT, 2-spd., Aux. Hyd., Nice (80%) rubber, rear weight brackets, 35<sup>th</sup> Anniversary Model.



**Southern Classic Mdl. LGN76620** 20' x 6 1/2' Alum. GN Stock Trailer, 14K tandem axle, 8-bolt hubs, center splitter w/roller door, front fold up vents & removable lower vent strips.

**Also selling...Custom GN Flatbed tandem axle trailer**, 102' x 25' (w/4' beaver tail), fold up ramps, single wheel 8-bolt hubs, nice floor, under deck ties and Alum. tool box.



**NH L213 Skidsteer**, QT, 3 outlet aux., good maintenance—5000 hrs. include many as daily multi feed push-up use.



**Host Farms Patz V420LP Vertical Portable TMR Mixer**, 4-wheel transport, rubber spill ring, LH or RH cross chain front discharge w/magnet, 2 digital scale read-out hds. located for front & side scale read. Well Maintained & Shredded! **Roto Grind Portable Rotary Tub bale grinder** w/LH blower discharge and hyd. control cap, Hyd. Spd. Control Tub. Grinder has nice original paint inside & out!



**Cows Sold—Farm Sold...More Great Equipment!**

**2014 CIH Farmall 95 MFWD**, Dual Door Cab, 18.4R-34 & 13.6R 24- 2 shafts, only 670 hrs. Cows sold, tractor left over from lease to own. A low-houred like-new tractor without the dealer lot price. Great **Gehl 3635SX Skidsteer**, Yanmar Dsl. powered, cab w/wheat, aux. hyd., T-bar, standard Universal attach., rear counter bumper w/pin hitch. Never in manure, nice original paint & only 1883 hrs. Selling alongside—4 new tires & chains.



**Katolight KLML-75-1000** portable generator, factory cart, single phase, 75 KW. The Mickes kept it shedded & covered. Excellent!

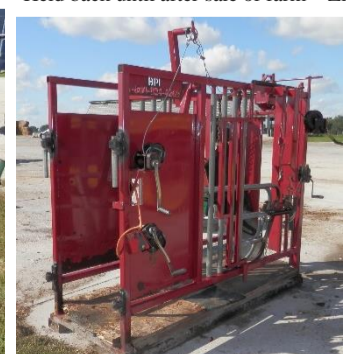


**Sweet...JD HPX Gator**, 4x4 ROPS w/canopy, hinged front bottom flip out glass windshield and additional lights. Gator has manual dump box w/liner. Adult driven, excellent care & paint—only 543 hrs. Held back until after sale of farm—Ziemer Estate.

**Excellent Micke Cattle Related & more...**



**Patz belt conveyor**; **Ueblor 812** Honda gas powered feed cart, RH unload—nice; **Approx. 1000** sidewall tire bunker covers; **2-Delaval Power Cattle Brushes** in good running order & just out of use. **BPI Portable Hoof Chute** w/under floor pallet fork tubes & rear removable entrance gates—complete & good! Like Brand New **Herd Pro Catch Chute**, rear vertical drop gate w/front controls—not broke in yet! **Lots & lots of gates** removed & ready to load, several brands & many lengths ranging from 8' to 16' **Portable Calf Cart**—like brand new. **Custom built HD portable loading chute**, pin hitch, all steel, adj. stands. Excellent! **Big Assortment of QT & Other Attachments...Artex 1512SM QT Bedding Shooter**, L or RH—nice original paint; **Becker Woodchuck 80 HTL Bedding Shooter QT Skid 6' rotary mower**—works on low flow machines. **QT Skid round bale clamp**—VG! **Fritsch Equipment 6' QT Facer**—in use right up to the auction—good. **Tire Gator 160** bunker cover tire shooter, pallet fork quick mount, hyd. drive—great w/Telehandler. **HD 3 pt. or Ldr. Mt. bale spear** (or add weld-on QT plate) **10' HD Big Sno-push blade**, hyd. angle, bolt on edge & adj. pitch. **3-pt. Bunker plastic unroller**, 94" cap. width, adj. stands-VG **Plus...** buckets, pallet forks, & more. **Misc. Cattle Related...** Poly water tanks; poly feed cart; and more typical cow care items. **Straw**—Big Bales clean straw. **Quality haylage & corn silage** piles sell...feed tests available. See terms on opposite side.



A great offering with many items not found very often at farm auctions. Now more than ever, it makes sense to shop for quality used equipment and save the difference from new!  
Miller 'N Co. Auctions & Appraisals, LLC Gregg J Miller Newton, WI WI Reg. Auctioneer #488 (920)980-4995 or -4999